

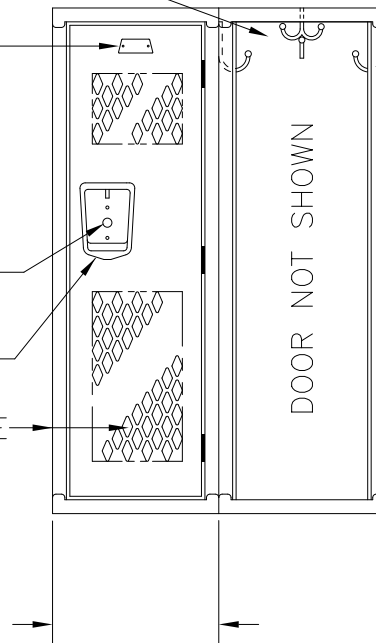
ONE DBL. PRONG CEILING  
HOOK & THREE SGL. PRONG  
WALL HOOKS EA. OPG.

ALUMINUM NO. PLATE

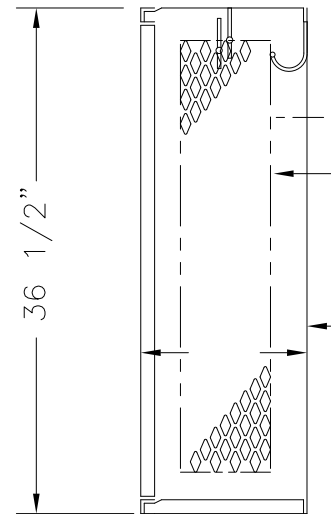
LOCK HOLE COVER PLATE

STAINLESS STEEL RECESSED  
POCKET WITH PADLOCK EYE

14GA. DOOR & 16GA. FRAME  
DOOR RECEIVES DIAMOND  
PERFORATIONS



ELEVATION



SECTION @ WALL

36 1/2" HIGH SINGLE TIER INVINCIBLE II KNOCKDOWN

TYPICAL FOR 9" & 12" WIDE, ALLOW 1/16" CREEPAGE PER FRAME

TYPICAL FOR 12", 15", & 18" DEEP

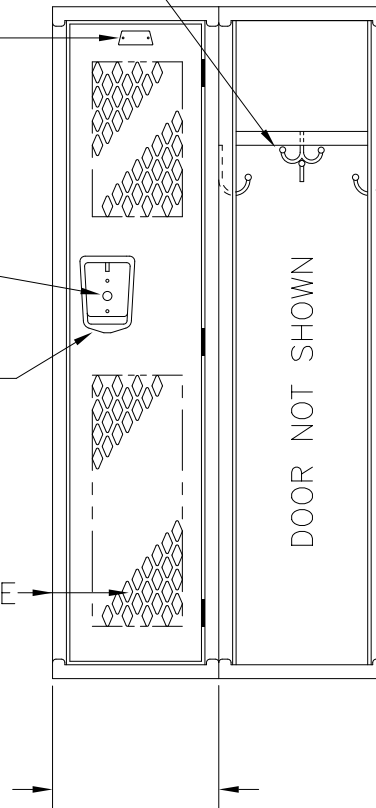
ONE DBL. PRONG CEILING  
HOOK & THREE SGL. PRONG  
WALL HOOKS EA. OPG.

ALUMINUM NO. PLATE

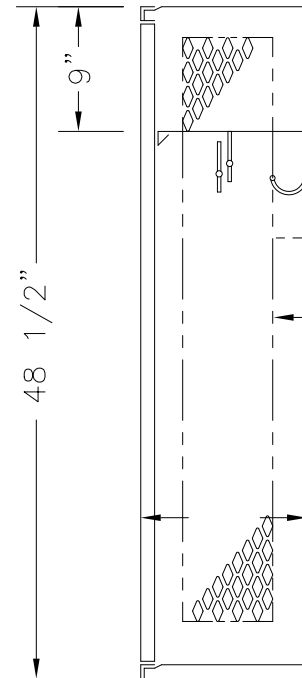
LOCK HOLE COVER PLATE

STAINLESS STEEL RECESSED  
POCKET WITH PADLOCK EYE

14GA. DOOR & 16GA. FRAME  
DOOR RECEIVES DIAMOND  
PERFORATIONS



ELEVATION



16GA. TOP, BOTTOM,  
SHELF & DIVISIONS  
DIVISION RECEIVES DIAMOND  
PERFORATIONS

18GA. BACK

SECTION @ WALL

48 1/2" HIGH SINGLE TIER INVINCIBLE II KNOCKDOWN LOCKER

TYPICAL FOR 9" & 12" WIDE, ALLOW 1/16" CREEPAGE PER FRAME

TYPICAL FOR 12" & 15" DEEP

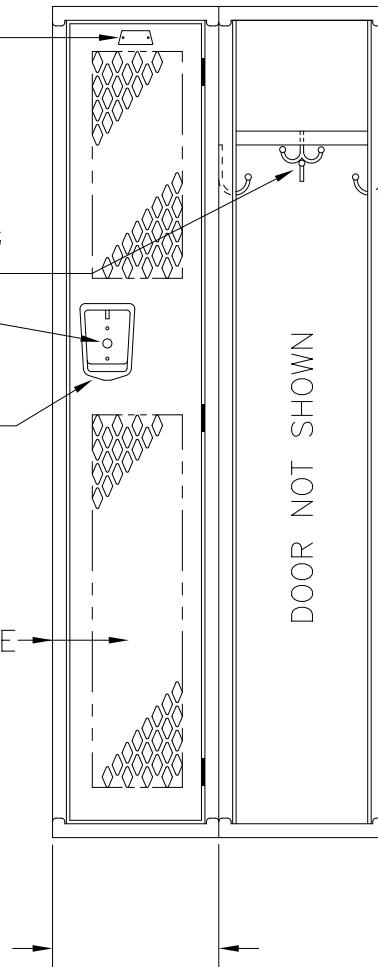
ALUMINUM NO. PLATE

ONE DBL. PRONG CEILING  
HOOK & THREE SGL. PRONG  
WALL HOOKS EA. OPG.

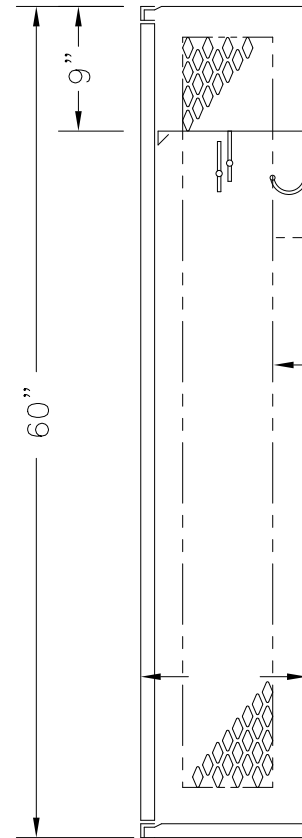
LOCK HOLE COVER PLATE

STAINLESS STEEL RECESSED  
POCKET WITH PADLOCK EYE

14GA. DOOR & 16GA. FRAME  
DOOR RECEIVES DIAMOND  
PERFORATIONS



ELEVATION



16GA. TOP, BOTTOM,  
SHELF & DIVISIONS  
DIVISION RECEIVES DIAMOND  
PERFORATIONS

18GA. BACK

SECTION @ WALL

60" HIGH SINGLE TIER INVINCIBLE II KNOCKDOWN LOCKER

TYPICAL FOR 9" & 12" WIDE, ALLOW 1/16" CREEPAGE PER FRAME  
TYPICAL FOR 12" & 15" DEEP

This drawing shows a standard Penco Product. Any modifications  
to the product must be approved by Penco Engineering. 8/6/2001



121260INV.dwg

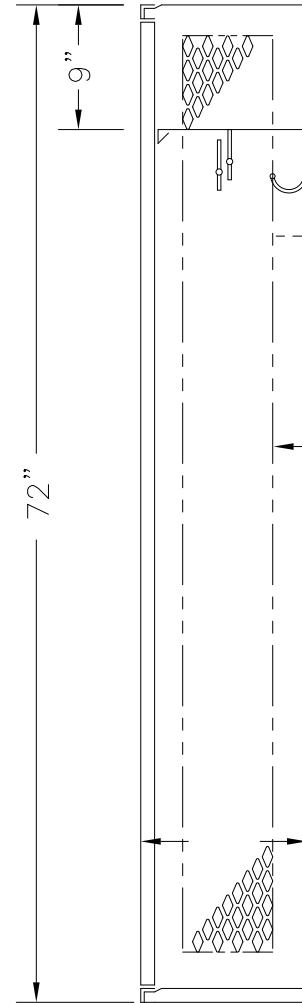
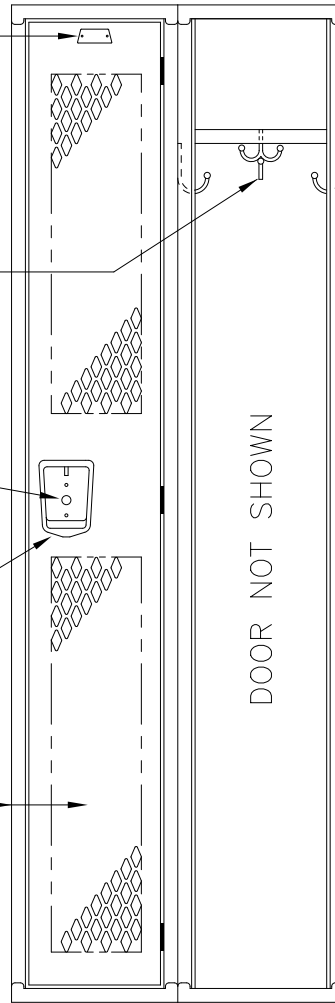
ALUMINUM NO. PLATE

ONE DBL. PRONG CEILING  
HOOK & THREE SGL. PRONG  
WALL HOOKS EA. OPG.

LOCK HOLE COVER PLATE

STAINLESS STEEL RECESSED  
POCKET WITH PADLOCK EYE

14GA. DOOR & 16GA. FRAME  
DOOR RECEIVES DIAMOND  
PERFORATIONS



16GA. TOP, BOTTOM,  
SHELF & DIVISIONS  
DIVISION RECEIVES DIAMOND  
PERFORATIONS

18GA. BACK

ELEVATION SECTION @ WALL  
72" HIGH SINGLE TIER INVINCIBLE II KNOCKDOWN LOCKER

9" & 12" WIDE, ALLOW 1/16" CREEPAGE PER FRAME  
TYPICAL FOR 12" & 15" DEEP

This drawing shows a standard Penco Product. Any modifications to the product must be approved by Penco Engineering. 8/6/2001



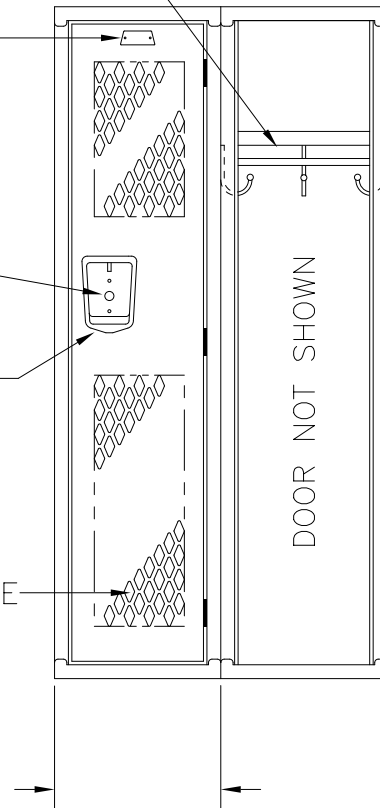
ONE COAT ROD &  
THREE SGL. PRONG  
WALL HOOKS EA. OPG.

ALUMINUM NO. PLATE

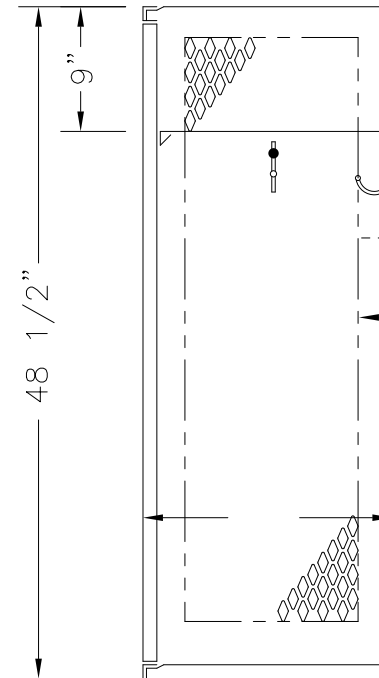
LOCK HOLE COVER PLATE

STAINLESS STEEL RECESSED  
POCKET WITH PADLOCK EYE

14GA. DOOR & 16GA. FRAME  
DOOR RECEIVES DIAMOND  
PERFORATIONS



ELEVATION



16GA. TOP, BOTTOM,  
SHELF & DIVISIONS  
DIVISION RECEIVES DIAMOND  
PERFORATIONS

18GA. BACK

SECTION @ WALL

48 1/2" HIGH SINGLE TIER INVINCIBLE II KNOCKDOWN LOCKER

TYPICAL FOR 9" & 12" WIDE, ALLOW 1/16" CREEPAGE PER FRAME

TYPICAL FOR 18" & 21" & 24" DEEP

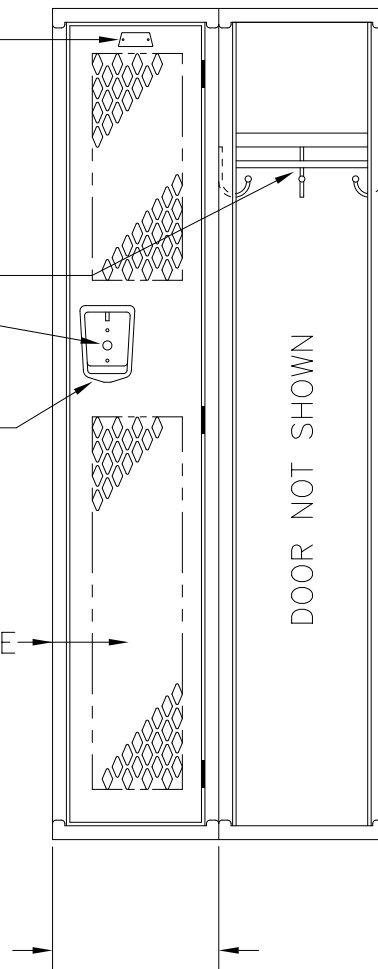
ALUMINUM NO. PLATE

ONE COAT ROD &  
THREE SGL. PRONG  
WALL HOOKS EA. OPG.

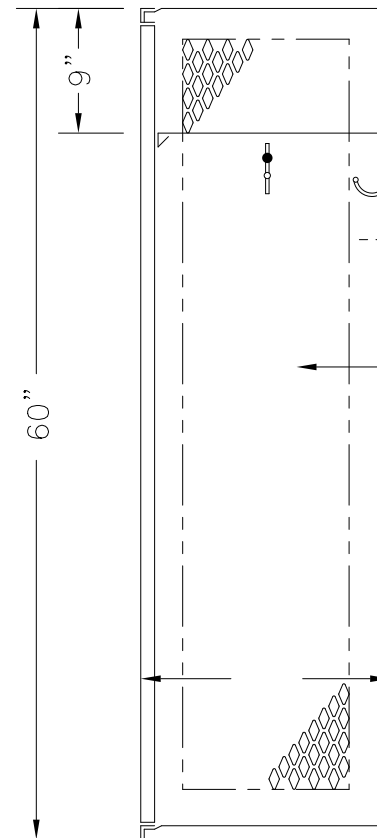
LOCK HOLE COVER PLATE

STAINLESS STEEL RECESSED  
POCKET WITH PADLOCK EYE

14GA. DOOR & 16GA. FRAME  
DOOR RECEIVES DIAMOND  
PERFORATIONS



ELEVATION



16GA. TOP, BOTTOM,  
SHELF & DIVISIONS  
DIVISION RECEIVES DIAMOND  
PERFORATIONS

18GA. BACK

SECTION @ WALL

60" HIGH SINGLE TIER INVINCIBLE II KNOCKDOWN LOCKER

9" & 12" WIDE, ALLOW 1/16" CREEPAGE PER FRAME

TYPICAL FOR 18", 21", & 24" DEEP

This drawing shows a standard Penco Product. Any modifications to the product must be approved by Penco Engineering. 8/6/2001



121860INV.dwg

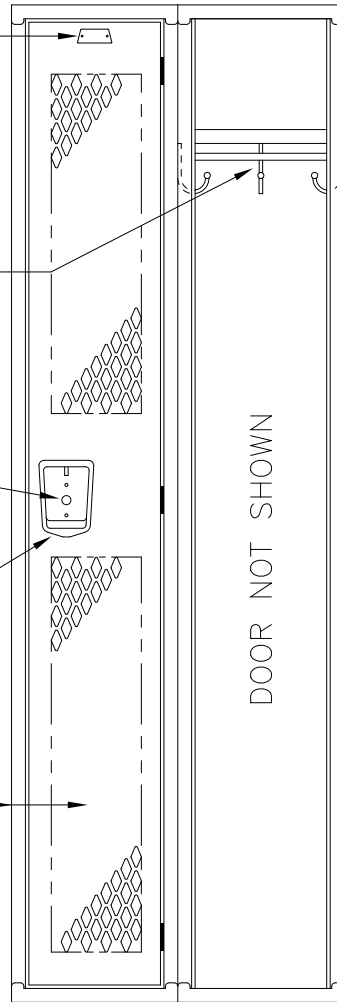
ALUMINUM NO. PLATE

ONE COAT ROD &  
THREE SGL. PRONG  
WALL HOOKS EA. OPG.

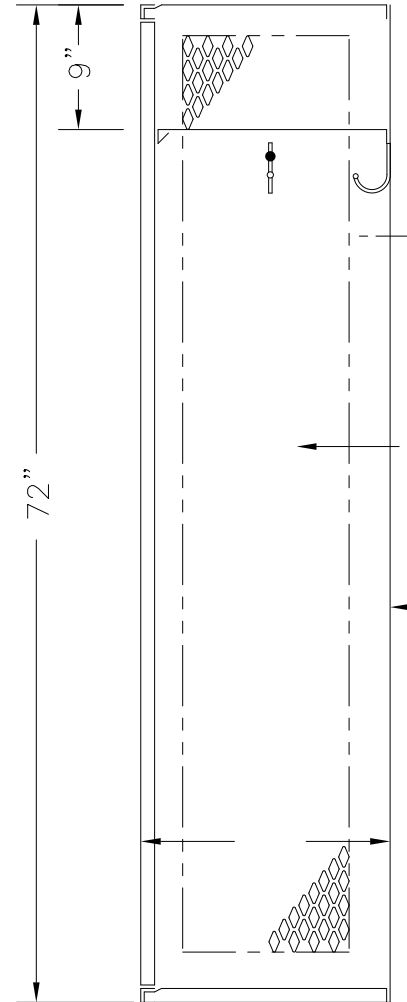
LOCK HOLE COVER PLATE

STAINLESS STEEL RECESSED  
POCKET WITH PADLOCK EYE

14GA. DOOR & 16GA. FRAME  
DOOR RECEIVES DIAMOND  
PERFORATIONS



ELEVATION



16GA. TOP, BOTTOM,  
SHELF & DIVISIONS  
DIVISION RECEIVES DIAMOND  
PERFORATIONS

18GA. BACK

SECTION @ WALL

72" HIGH SINGLE TIER INVINCIBLE II KNOCKDOWN LOCKER

9" & 12" WIDE, ALLOW 1/16" CREEPAGE PER FRAME  
TYPICAL FOR 18", 21", & 24" DEEP

This drawing shows a standard Penco Product. Any modifications to the product must be approved by Penco Engineering. 8/6/2001



ALUMINUM NO. PLATE

ONE DBL. PRONG CEILING  
HOOK & FOUR SGL. PRONG  
WALL HOOKS EA. OPG.

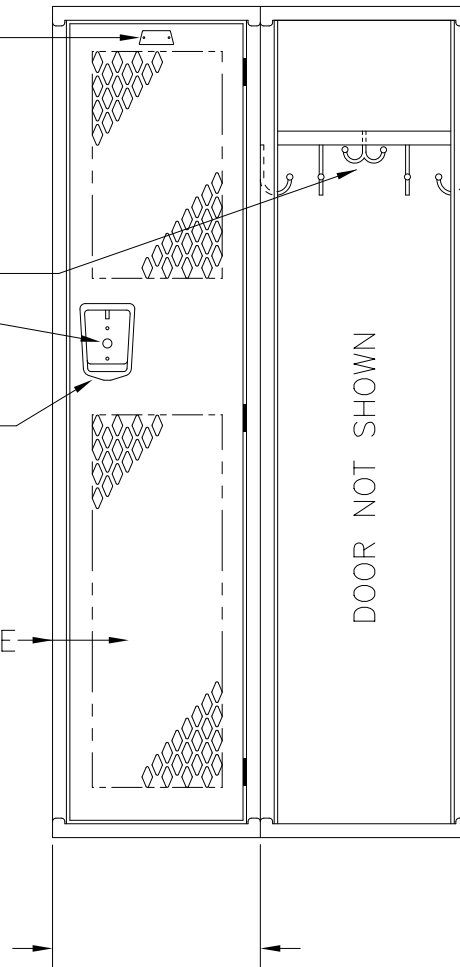
LOCK HOLE COVER PLATE

STAINLESS STEEL RECESSED  
POCKET WITH PADLOCK EYE

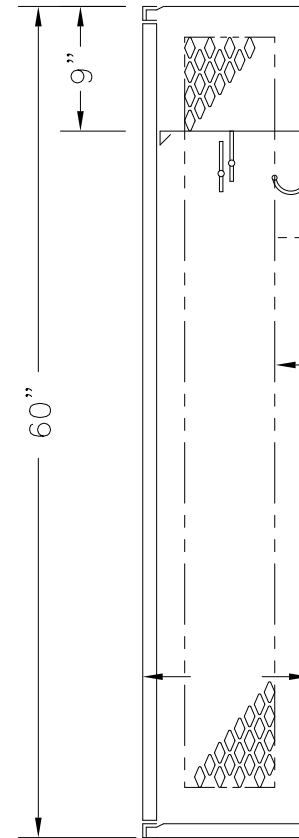
14GA. DOOR & 16GA. FRAME

DOOR RECEIVES DIAMOND  
PERFORATIONS

18" RECEIVES DOOR REINFORCING PAN



ELEVATION



SECTION @ WALL

16GA. TOP, BOTTOM,  
SHELF & DIVISIONS  
DIVISION RECEIVES DIAMOND  
PERFORATIONS

18GA. BACK

60" HIGH SINGLE TIER INVINCIBLE II KNOCKDOWN LOCKER  
15" & 18" WIDE, ALLOW 1/16" CREEPAGE PER FRAME  
TYPICAL FOR 12" & 15" DEEP

This drawing shows a standard Penco Product. Any modifications  
to the product must be approved by Penco Engineering. 8/6/2001



151260INV.dwg

ALUMINUM NO. PLATE

ONE DBL. PRONG CEILING  
HOOK & FOUR SGL. PRONG  
WALL HOOKS EA. OPG.

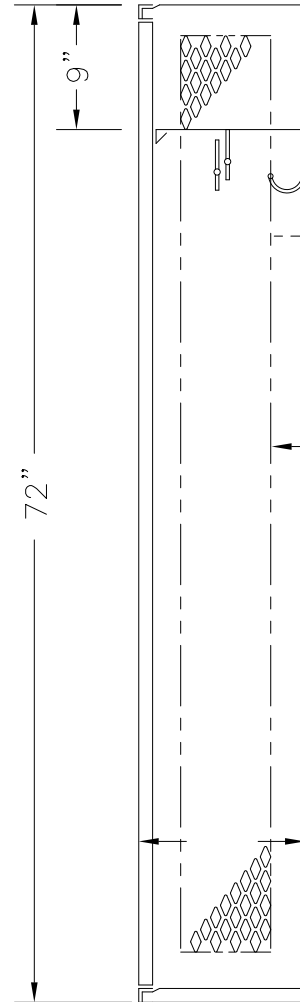
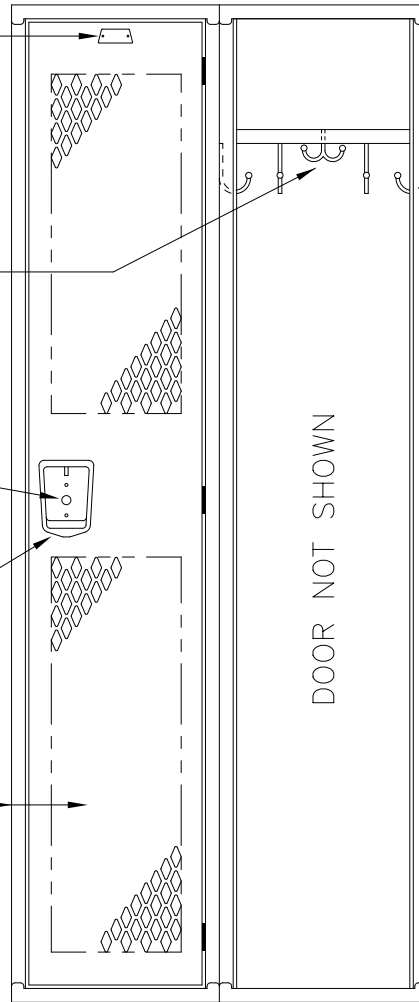
LOCK HOLE COVER PLATE

STAINLESS STEEL RECESSED  
POCKET WITH PADLOCK EYE

14GA. DOOR & 16GA. FRAME

DOOR RECEIVES DIAMOND  
PERFORATIONS

18" RECEIVES DOOR REINFORCING PAN



16GA. TOP, BOTTOM,  
SHELF & DIVISIONS  
DIVISION RECEIVES DIAMOND  
PERFORATIONS

18GA. BACK

ELEVATION

SECTION @ WALL

72" HIGH SINGLE TIER INVINCIBLE II KNOCKDOWN LOCKER

15" & 18" WIDE, ALLOW 1/16" CREEPAGE PER FRAME

TYPICAL FOR 12" & 15" DEEP

This drawing shows a standard Penco Product. Any modifications  
to the product must be approved by Penco Engineering. 8/6/2001



151272INV.dwg

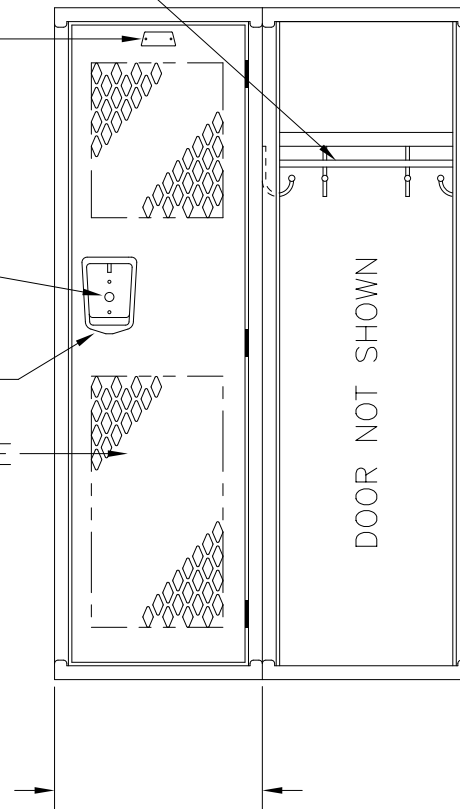
ONE COAT ROD &  
FOUR SGL. PRONG  
WALL HOOKS EA. OPG.

ALUMINUM NO. PLATE

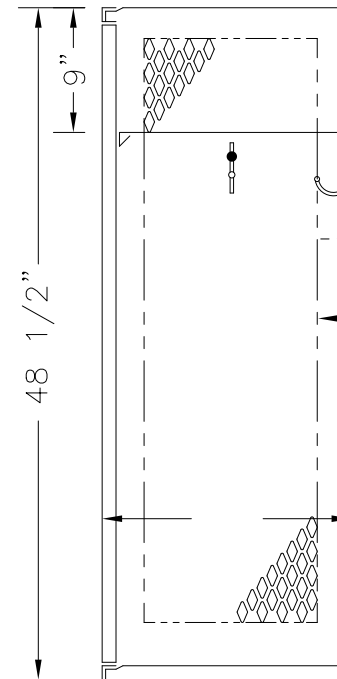
LOCK HOLE COVER PLATE

STAINLESS STEEL RECESSED  
POCKET WITH PADLOCK EYE

14GA. DOOR & 16GA. FRAME  
DOOR RECEIVES DIAMOND  
PERFORATIONS  
18" RECEIVES DOOR REINFORCING PAN



ELEVATION



16GA. TOP, BOTTOM,  
SHELF & DIVISIONS  
DIVISION RECEIVES DIAMOND  
PERFORATIONS

18GA. BACK

SECTION @ WALL

48 1/2" HIGH SINGLE TIER INVINCIBLE II LOCKER

TYPICAL FOR 15" & 18" WIDE, ALLOW 1/16" CREEPAGE PER FRAME

TYPICAL FOR 18", 21", & 24" DEEP

ALUMINUM NO. PLATE

ONE COAT ROD &  
FOUR SGL. PRONG  
WALL HOOKS EA. OPG.

LOCK HOLE COVER PLATE

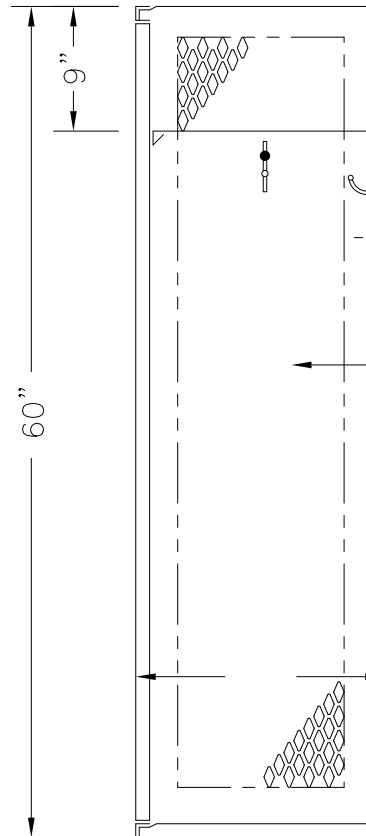
STAINLESS STEEL RECESSED  
POCKET WITH PADLOCK EYE

14GA. DOOR & 16GA. FRAME

DOOR RECEIVES DIAMOND  
PERFORATIONS

18" RECEIVES DOOR REINFORCING PAN

DOOR NOT SHOWN



16GA. TOP, BOTTOM,  
SHELF & DIVISIONS  
DIVISION RECEIVES DIAMOND  
PERFORATIONS

18GA. BACK

ELEVATION

SECTION @ WALL

**60" HIGH SINGLE TIER INVINCIBLE II KNOCKDOWN LOCKER**

15" & 18" WIDE, ALLOW 1/16" CREEPAGE PER FRAME

TYPICAL FOR 18", 21", & 24" DEEP

This drawing shows a standard Penco Product. Any modifications to the product must be approved by Penco Engineering. 8/6/2001



151860INV.dwg

ALUMINUM NO. PLATE

ONE COAT ROD &  
FOUR SGL. PRONG  
WALL HOOKS EA. OPG.

LOCK HOLE COVER PLATE

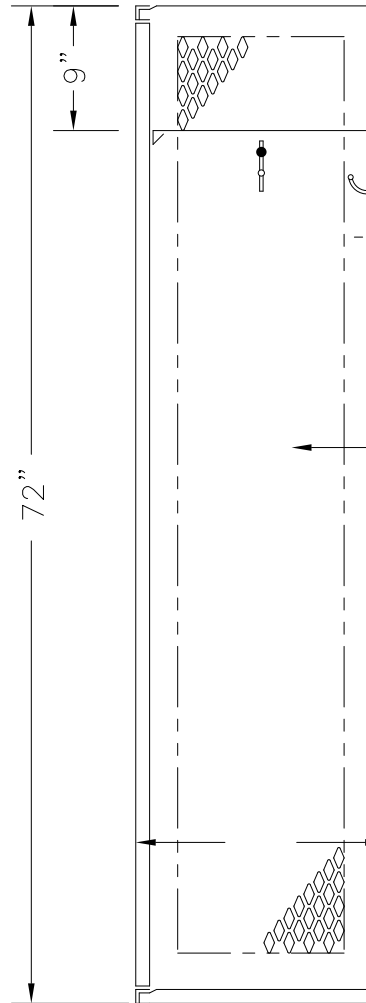
STAINLESS STEEL RECESSED  
POCKET WITH PADLOCK EYE

14GA. DOOR & 16GA. FRAME

DOOR RECEIVES DIAMOND  
PERFORATIONS

18" RECEIVES DOOR REINFORCING PAN

DOOR NOT SHOWN



16GA. TOP, BOTTOM,  
SHELF & DIVISIONS  
DIVISION RECEIVES DIAMOND  
PERFORATIONS

18GA. BACK

ELEVATION

SECTION @ WALL

72" HIGH SINGLE TIER INVINCIBLE II KNOCKDOWN LOCKER

15" & 18" WIDE, ALLOW 1/16" CREEPAGE PER FRAME

TYPICAL FOR 18", 21" & 24" DEEP

This drawing shows a standard Penco Product. Any modifications to the product must be approved by Penco Engineering. 8/6/2001



151872INV.dwg

ALUMINUM NO. PLATE

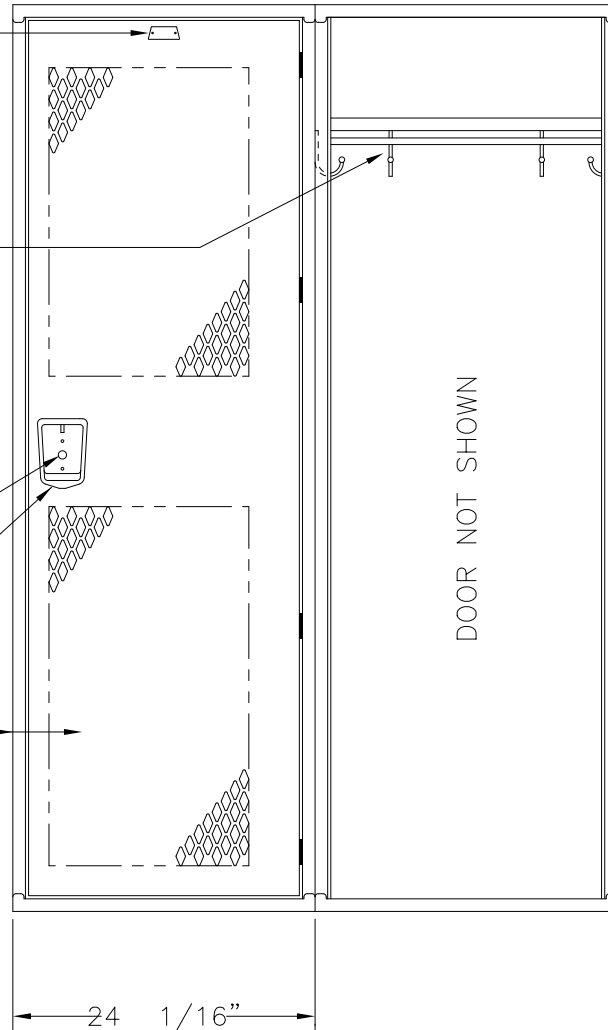
ONE COAT ROD & FOUR  
SGL. PRONG WALL HOOKS  
EA. OPG.

15" DEEP RECEIVES DBL.  
PRONG CEILING HOOK IN  
LIEU OF COAT ROD

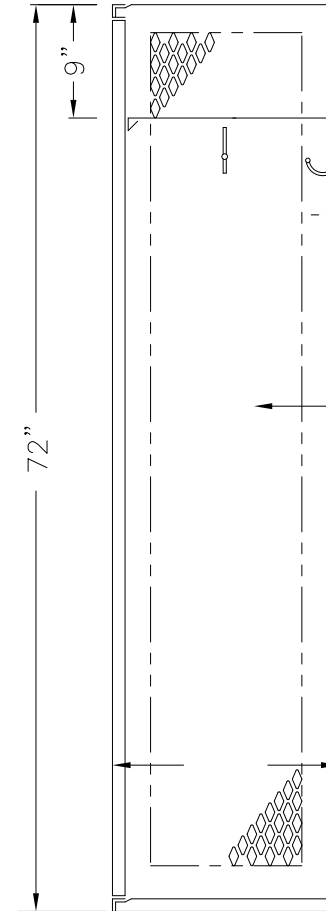
LOCK HOLE COVER PLATE

STAINLESS STEEL RECESSED  
POCKET WITH PADLOCK EYE

14GA. DOOR & 16GA. FRAME  
DOOR RECEIVES REINFORCING PAN  
DOOR RECEIVES DIAMOND  
PERFORATIONS



ELEVATION



16GA. TOP, BOTTOM,  
SHELF & DIVISIONS  
DIVISION RECEIVES DIAMOND  
PERFORATIONS

18GA. BACK

SECTION @ WALL

72" HIGH SINGLE TIER SINGLE DOOR INVINCIBLE II KNOCKDOWN LOCKER

This drawing shows a standard Penco Product. Any modifications to the product must be approved by Penco Engineering. 8/6/2001

24" WIDE, ALLOW 1/16" CREEPAGE PER FRAME  
TYPICAL FOR 18", 21", & 24" DEEP



241872INV.dwg